

Anti-EphA2 hlgG1 Antibody(MEDI-547)

Product information

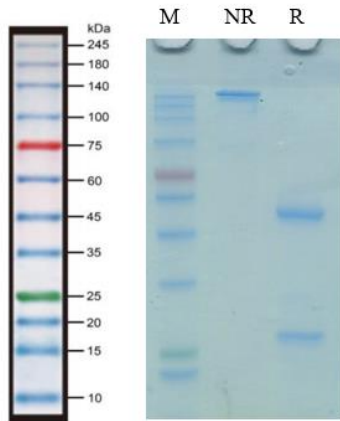
GM-87695AB-10	10 µg
GM-87695AB-100	100 µg
GM-87695AB-1000	1 mg

Antibody Information

Species Reactivity	Human
Clone	MEDI-547
Source/Isotype	Monoclonal human IgG1, κ
Application	Bioactivity-ELISA
Specificity	Detects EphA2
Gene	EphA2
Other Names	ARCC2, CTPA, CTPP1, CTRCT6, ECK
Gene ID	1969 (human)
Background	This gene belongs to the ephrin receptor subfamily of the protein-tyrosine kinase family. EPH and EPH-related receptors have been implicated in mediating developmental events, particularly in the nervous system. Receptors in the EPH subfamily typically have a single kinase domain and an extracellular region containing a Cys-rich domain and 2 fibronectin type III repeats. The ephrin receptors are divided into 2 groups based on the similarity of their extracellular domain sequences and their affinities for binding ephrin-A and ephrin-B ligands. This gene encodes a protein that binds ephrin-A ligands. Mutations in this gene are the cause of certain genetically-related cataract disorders.
Storage	Store at 2-8°C short term (1-2 weeks).Store at ≤ -20°C long term. Avoid repeated freeze-thaw.
Formulation	Phosphate-buffered solution, pH 7.2.
Endotoxin	< 1 EU/mg, determined by LAL gel clotting assay

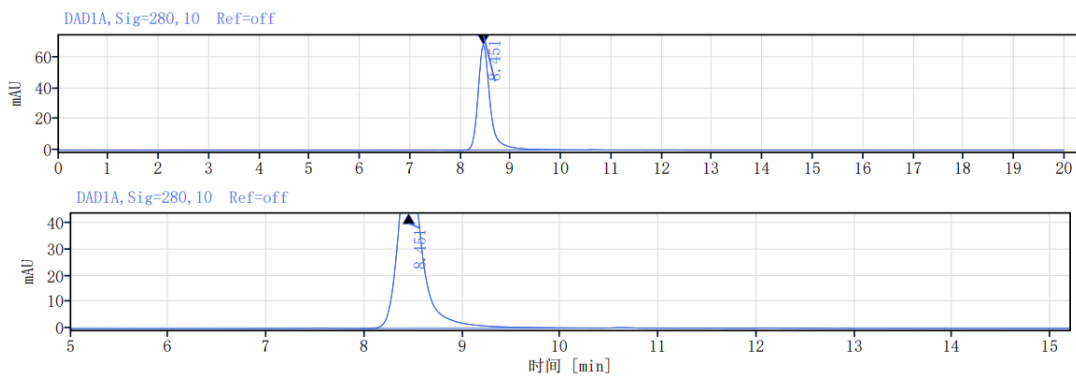
Data Examples

SDS-PAGE



On SDS-PAGE under reducing (R)/non-reducing(N-R) condition. The gel was stained overnight with Coomassie Blue. The purity of the protein is greater than 95%.

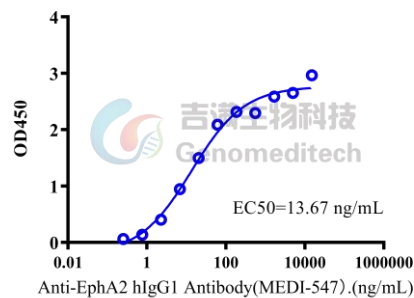
SEC-HPLC



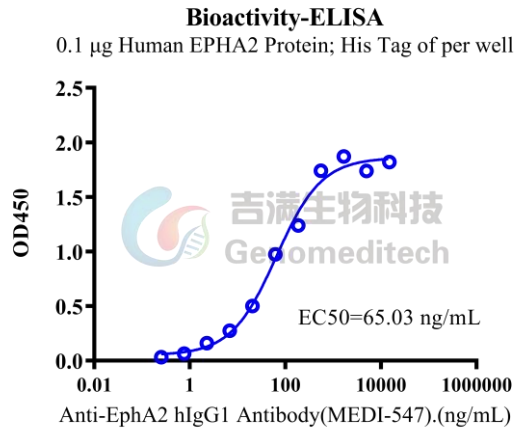
The purity of this product is more than 95% verified by SEC-HPLC

Bioactivity-ELISA

Bioactivity-ELISA
 0.1 μ g Biotinylated Human EPHA2 Protein; His-Avi Tag of per well



Biotinylated Human EPHA2 Protein; His-Avi Tag (Catalog # GM-87626RP) was immobilized at 1 μ g/ml (100 μ L/well) on streptavidin precoated. Increasing concentrations of Anti-EphA2 hlgG1 Antibody(MEDI-547) (Catalog # GM-87695AB) were added.



Human EPHA2 Protein; His Tag (Catalog # GM-87625RP) was immobilized at 1 μ g/ml (100 μ L/well).
Increasing concentrations of Anti-EphA2 hIgG1 Antibody(MEDI-547) (Catalog # GM-87695AB) were added.